

Seed Paper Art Setup Guide

***PLEASE TAKE NOTE OF THESE KEY POINTS
& THE VISUAL EXAMPLES ON THE FOLLOWING PAGES***

EACH SHEET HAS TO BE HAND FED INTO AN INK JET PRINTER SO THERE IS A TENDANCY FOR THE PAPER TO MOVE 1-3MM LEFT TO RIGHT AND OR TOP AND BOTTOM

******ARTWORK MUST BE POSITIONED 5MM WITHIN THE CUT LINES******

WHEN PRINTING BOTH SIDES, DO NOT SETUP ART WITH A SOLID COLOUR RUNNING ALONG THE 5MM BORDER ON THE REVERSE SIDE, THIS WILL ACCENTUATE ANY MOVEMENT IN THE PAPER

AVOID PRINTING VERY SMALL TEXT ON DARK BACK GROUNDS

WE RECOMMEND THE MINIMUM SIZED FONT TO BE NO SMALLER THAN 8DPI

BY FOLLOWING THESE SIMPLE GUIDELINES ALLOWS US TO PRINT THE MAXIMUM COVERAGE ON EACH SHEET CREATING LESS WASTE AND A LOWER PRICE POINT FOR YOU!

Seed Paper Art Setup Guide

**The City of Aramadale
is a good example:**



What can
you put
in your
general waste
bin?



Artwork is 5mm within
cut lines to compensate
for potential movement
in the sheets.

The black text under the
logo 'waste sorted' is
legible when printed
but do not supply any
smaller than 8DPI

Disclaimer: Due to the nature of the paper and print process there will be at times movement within the sheets which will skew the centred artwork slightly to one side or the other.

PULP & SEED®

Seed Paper Art Setup Guide



Avoid using solid colour for borders, it will draw the eye to art that has skewed slightly



By not using solid colours for a border the art has skewed to the right but is far less noticeable.

Disclaimer: Due to the nature of the paper and print process there will be at times movement within the sheets which will skew the centred artwork slightly to one side or the other.

Seed Paper Art Setup Guide

AVOID USING SOLID COLOURS FOR BORDERS,
IT WILL ACCENTUATE SKEWED ART.

Artwork is 5mm within
cut lines to compensate
with potential movement
and no solid colour has
been used for a border.

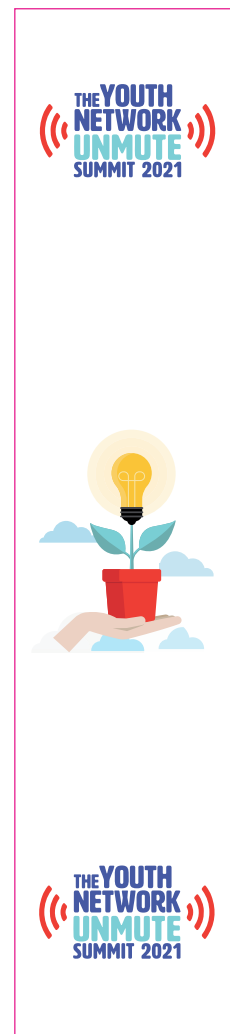
**NOT
ACCEPTABLE**



**NOT RECOMMENDED
BUT ACCEPTABLE**



PERFECT



Disclaimer: Due to the nature of the paper and print process there will be at times movement within the sheets which will skew the centred artwork slightly to one side or the other.

Seed Paper Art Setup Guide

DUE TO AUSTRALIAN BIO-SECURITY RULES & REGULATIONS ALL SEED RELATED PRODUCTS WHEN BEING SHIPPED THROUGHOUT AUSTRALIA MUST SHOW THE COMMON AND BOTANICAL NAME OF THE SEED VARIETY.

To grow your Swan River Daisy
(*Brachyscome iberidifolia*)

Planting instructions:

1. Place card in soil raising mix
2. Soak card until soft
3. Lightly cover with more soil, water and keep moist
4. Germination should take 15 - 25 days

This card is made from recycled paper and printed in an environmentally considerate way.

Disclaimer: Due to the nature of the paper and print process there will be at times movement within the sheets which will skew the centred artwork slightly to one side or the other.